

Diamond TUB & SHOWERS
www.diamondtubshowers.com where design and durability meet

Diamond Tub & Showers Spec Sheet

Model: TOA 603017 R/L (Right Shown)

Description: Tub Only with Apron

Specifications

Model #	Material	Wall Finish	Pieces	Drain	Apron Height	Net Weight Lbs.
TOA 603017 R/L	Fiberglass/ Gelcoat	Smooth	1	LH/RH	16 1/4"	

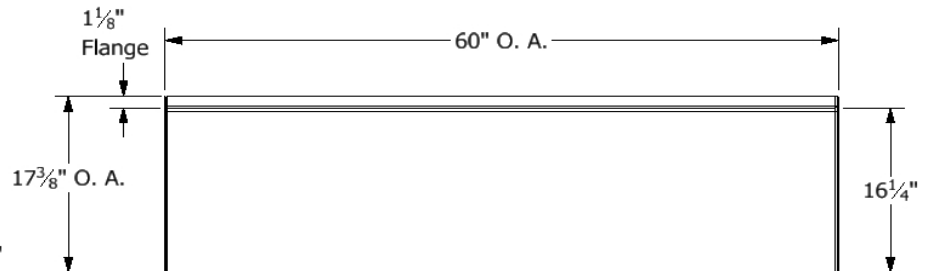
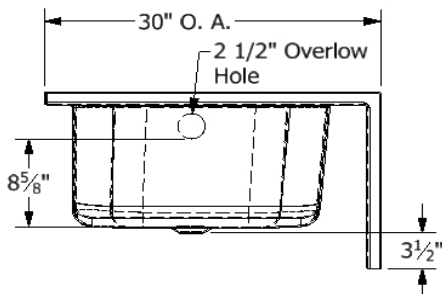
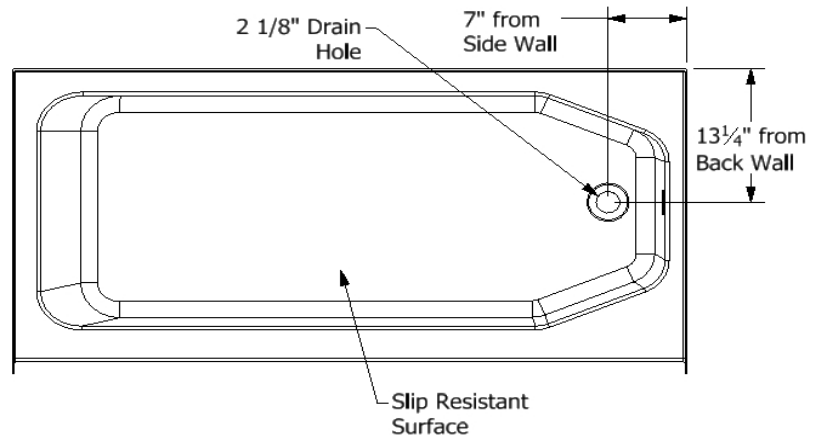
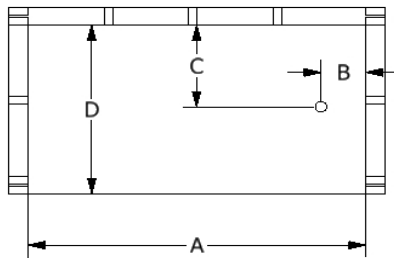
Framing Dimensions

A	B	C	D
60"	7"	13 1/4"	30"

Sump Data

Top of Drain to Bottom of Overflow	Capacity to Overflow Gallons	Top Dimensions Length	Top Dimensions Width	Bottom Dimensions Length	Bottom Dimensions Width
8 5/8"	38.7	55 3/4"	22 3/4"	51 1/4"	22"

Framing Specifications



Certified to conform to
HUD/UM73b, ANSI Z124.1, and
ASTM E- 162 Flame Spread
Rating 200 or less and is under
a program of factory inspection.

Manufactured by Frontline
Mfg., Inc. Leesburg, IN



2/19/13